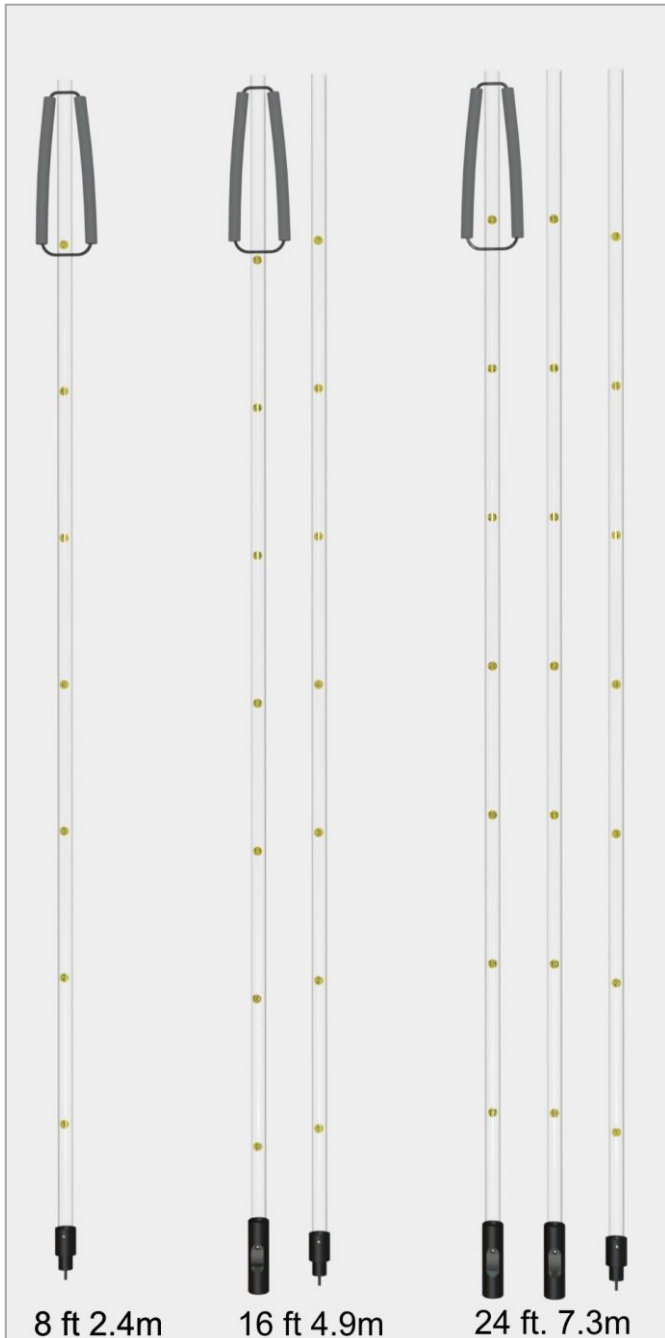


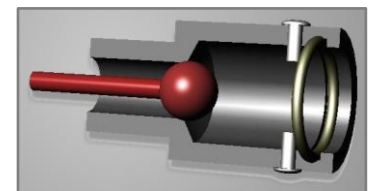
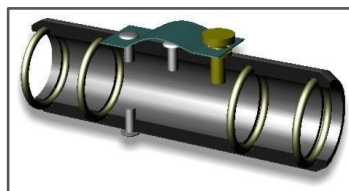
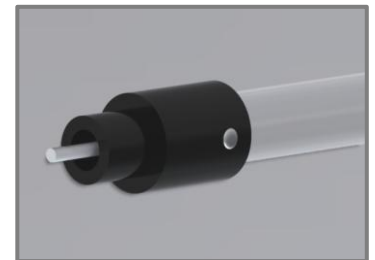
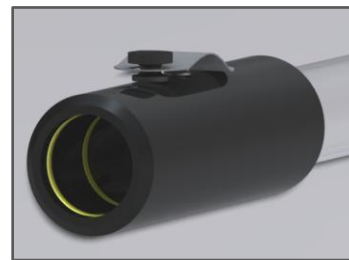
# CORETAKER® CORE SAMPLER

B-10104

CORETAKER® is used in wastewater and clean water plants to view sludge blankets and extract sludge samples for determining solids inventories in the Process Centrifuge.



Since 1983



SLIP-LOCK COUPLER

AUTOMATIC CHECK VALVE

## INDIVIDUALLY CNC MACHINED

Clear tubes are Polycarbonate with UV stabilizers. 1.25" OD.  
Fittings are CNC machined black UHMW with internal O-rings.  
Lanyard is closed cell industrial foam.

A serious tool for  
serious operators.  
You be the judge.

RAVEN ENVIRONMENTAL PRODUCTS, INC.  
St. Louis, MO 63122 USA  
SALES 800-545-6953  
Fax Orders 314-822-9968  
order online [www.ravenep.com](http://www.ravenep.com)



DESCRIPTION	EACH
8 ft. B-10104-8	\$ 79.20
16-ft. B-10104-16	\$ 108.00
24-ft. B-10104-24	\$152.00